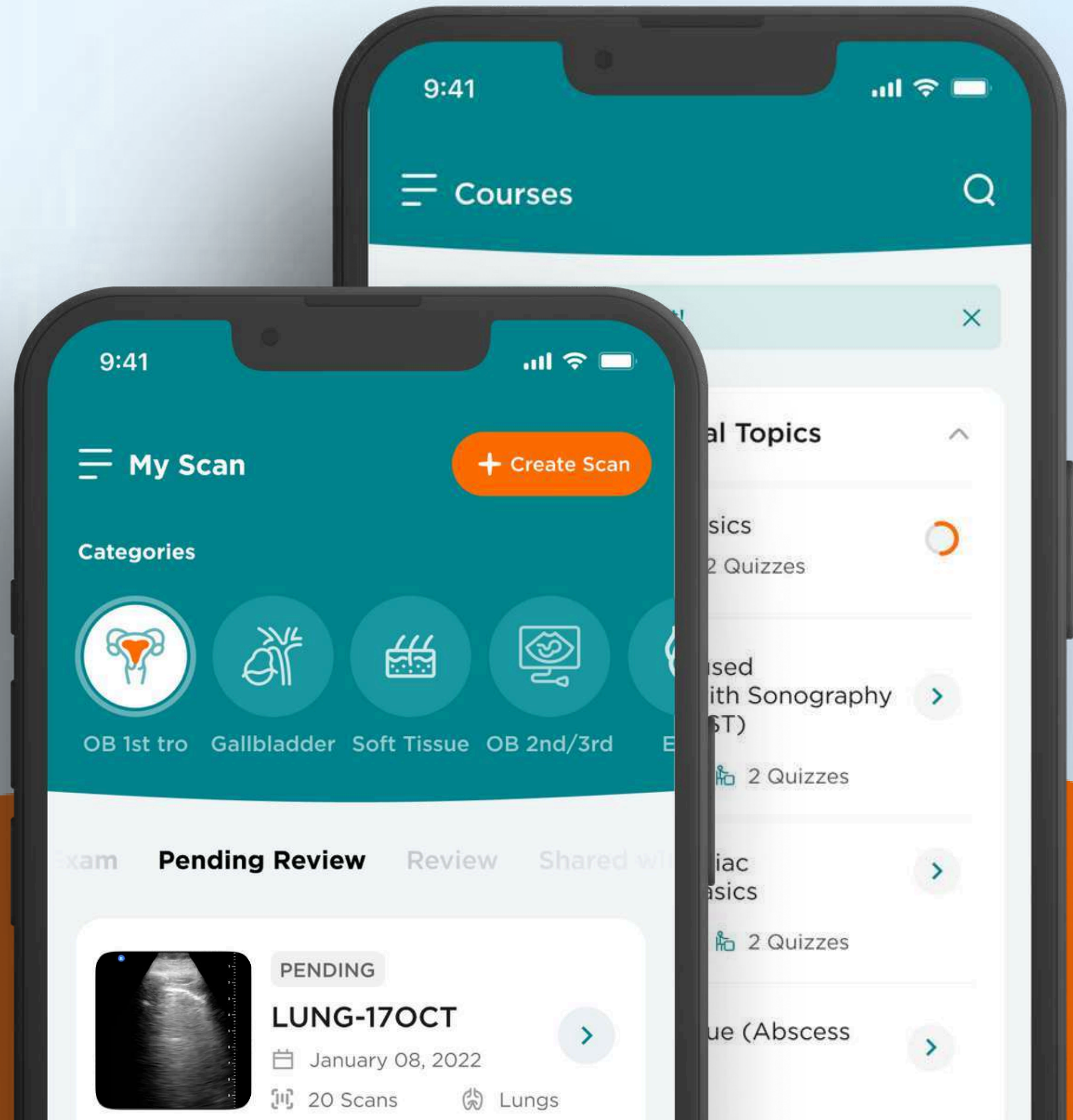
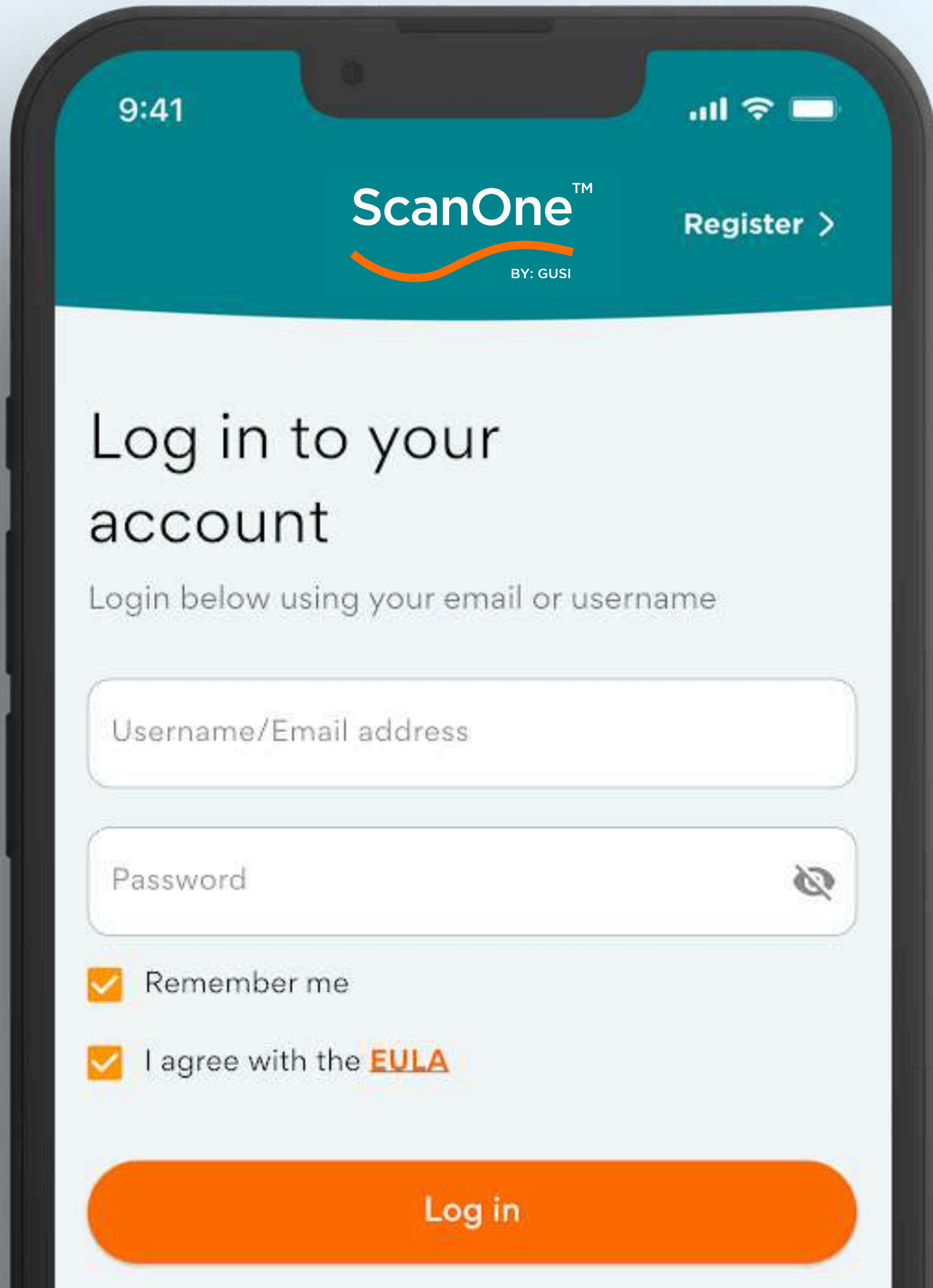


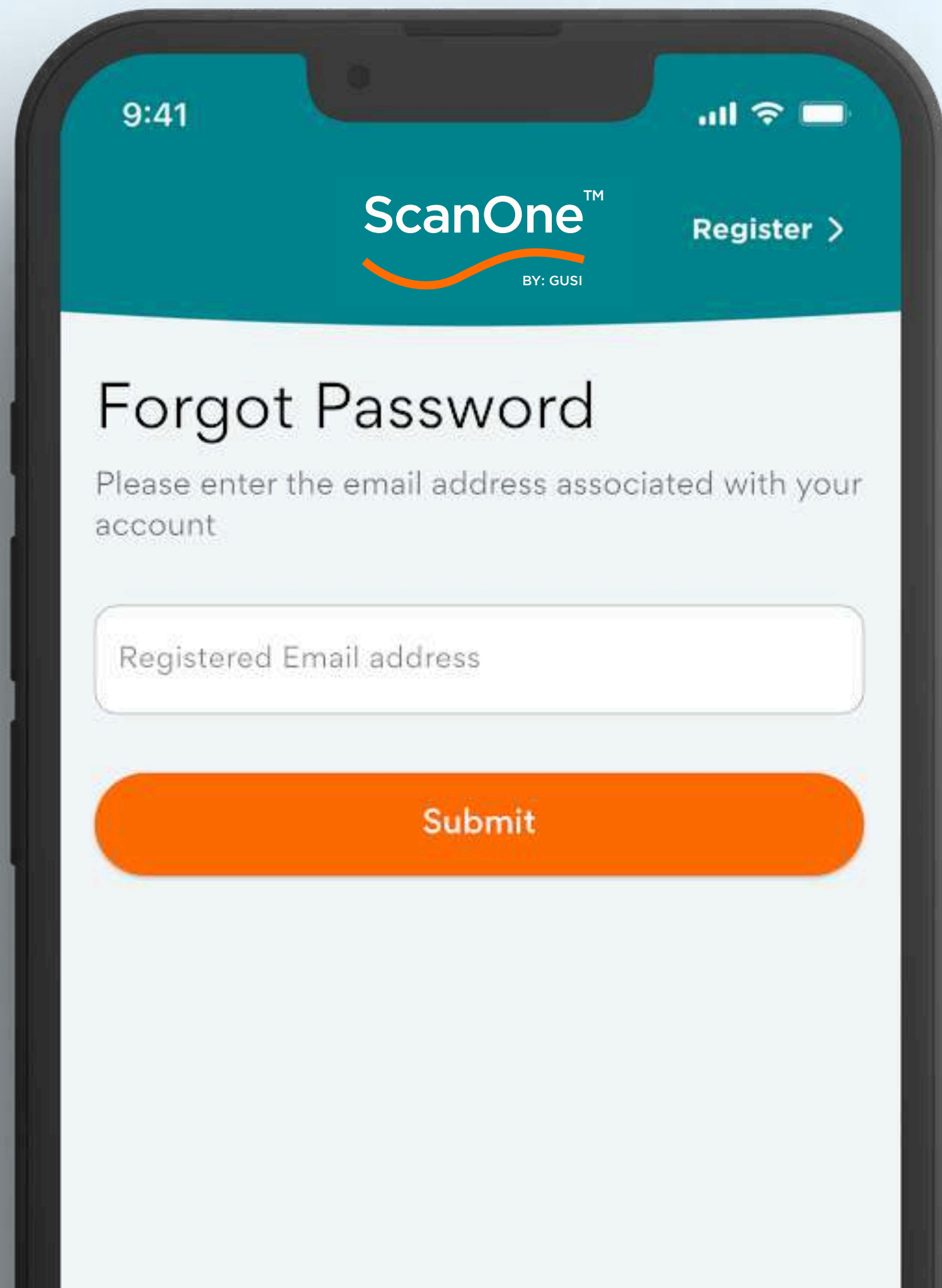
THE COMPLETE USER GUIDE





USER LOGIN

Enter your valid username or email and password, then tap Login.



FORGOT YOUR PASSWORD?

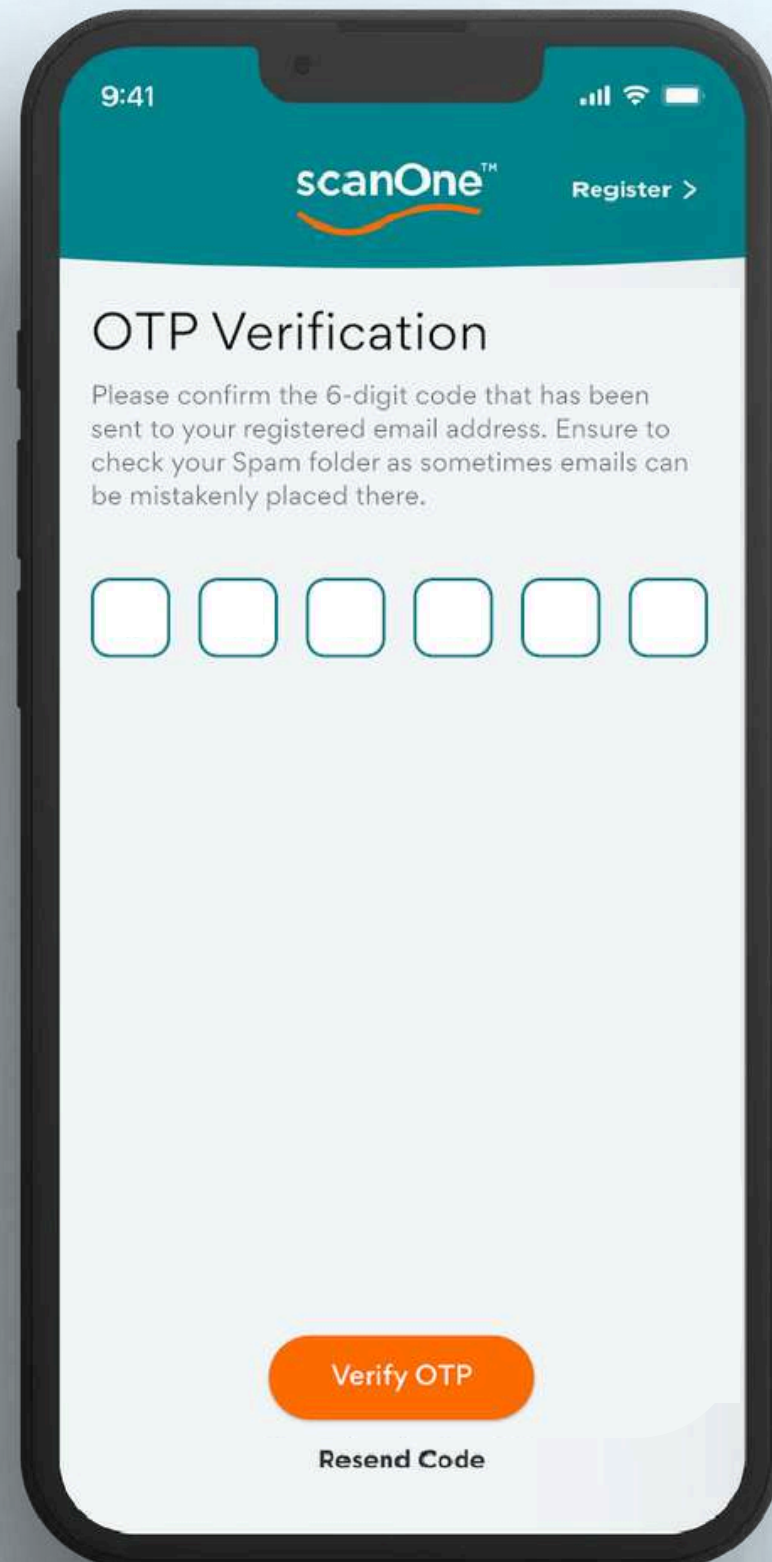
If you forget your password, tap **Forgot Password** and enter your registered email address.

You'll receive an OTP in your email. If you don't see it, please check your spam folder.

On the OTP Verification screen, enter the OTP. Once verified, you'll be taken to the Reset Password screen where you can create a new password.

FOLLOW THIS SCREEN

1



9:41

scanOne™ Register >

OTP Verification

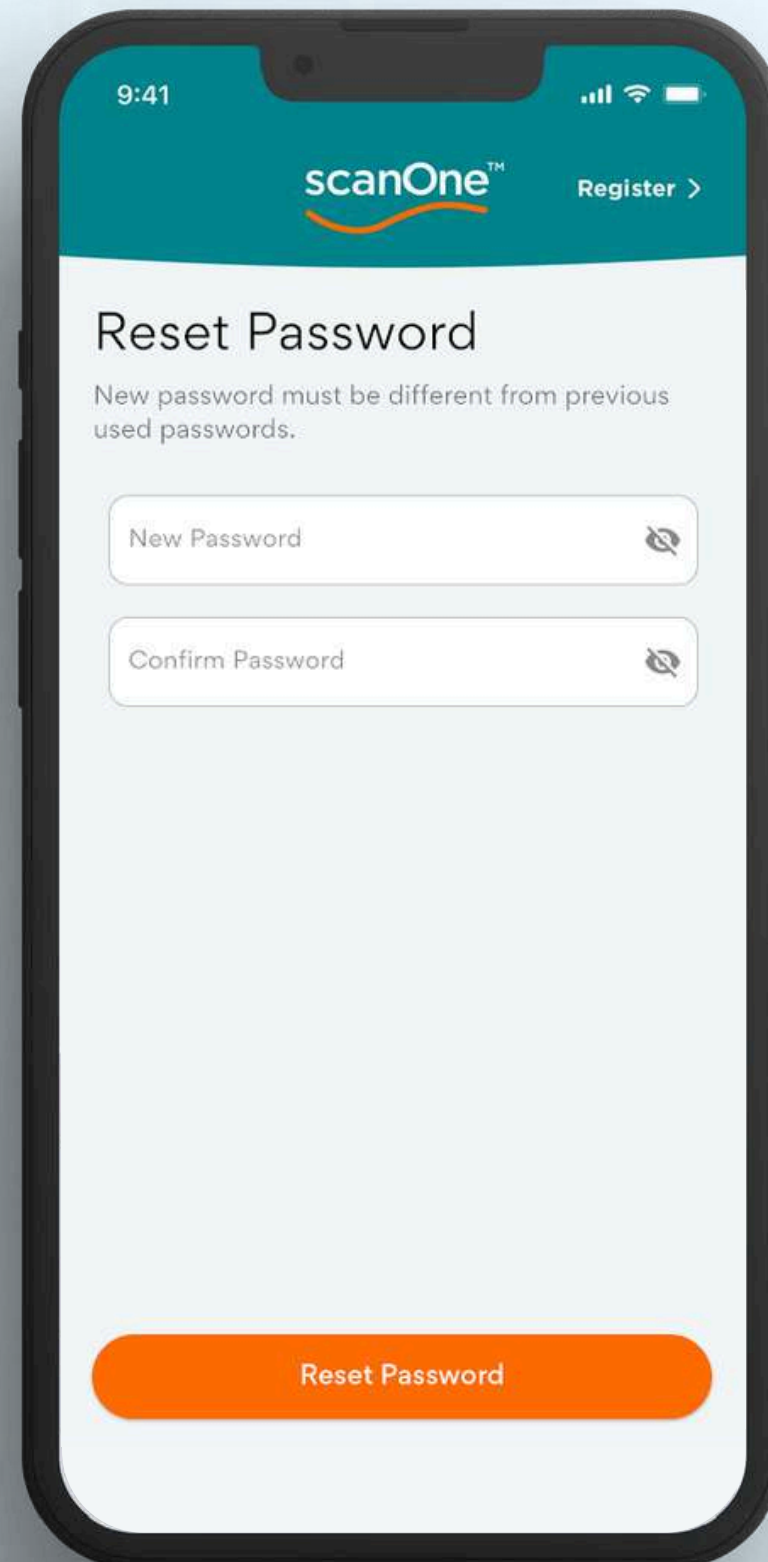
Please confirm the 6-digit code that has been sent to your registered email address. Ensure to check your Spam folder as sometimes emails can be mistakenly placed there.

○ ○ ○ ○ ○ ○

Verify OTP

Resend Code

2



9:41

scanOne™ Register >

Reset Password

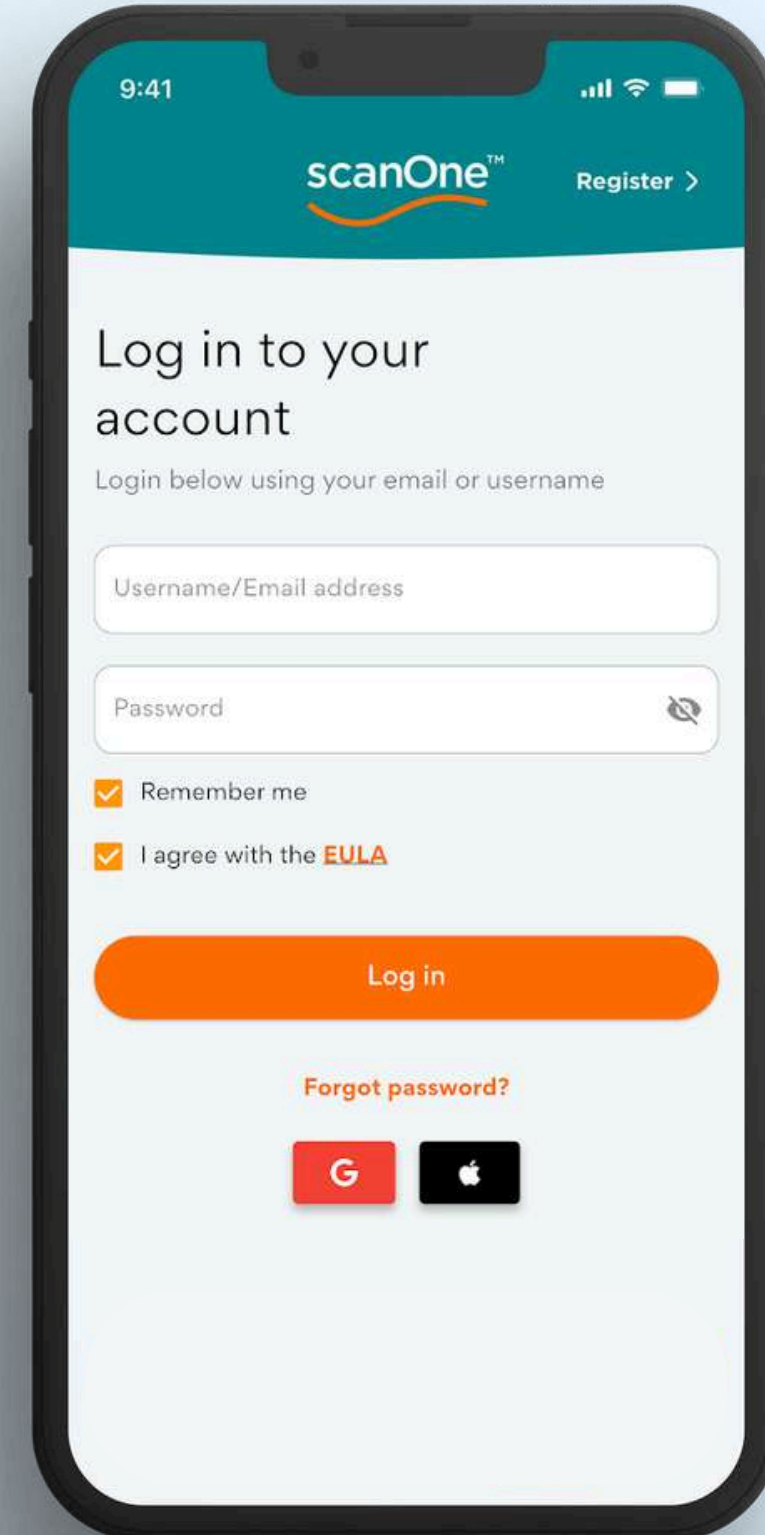
New password must be different from previous used passwords.

New Password

Confirm Password

Reset Password

3



9:41

scanOne™ Register >

Log in to your account

Login below using your email or username

Username/Email address

Password

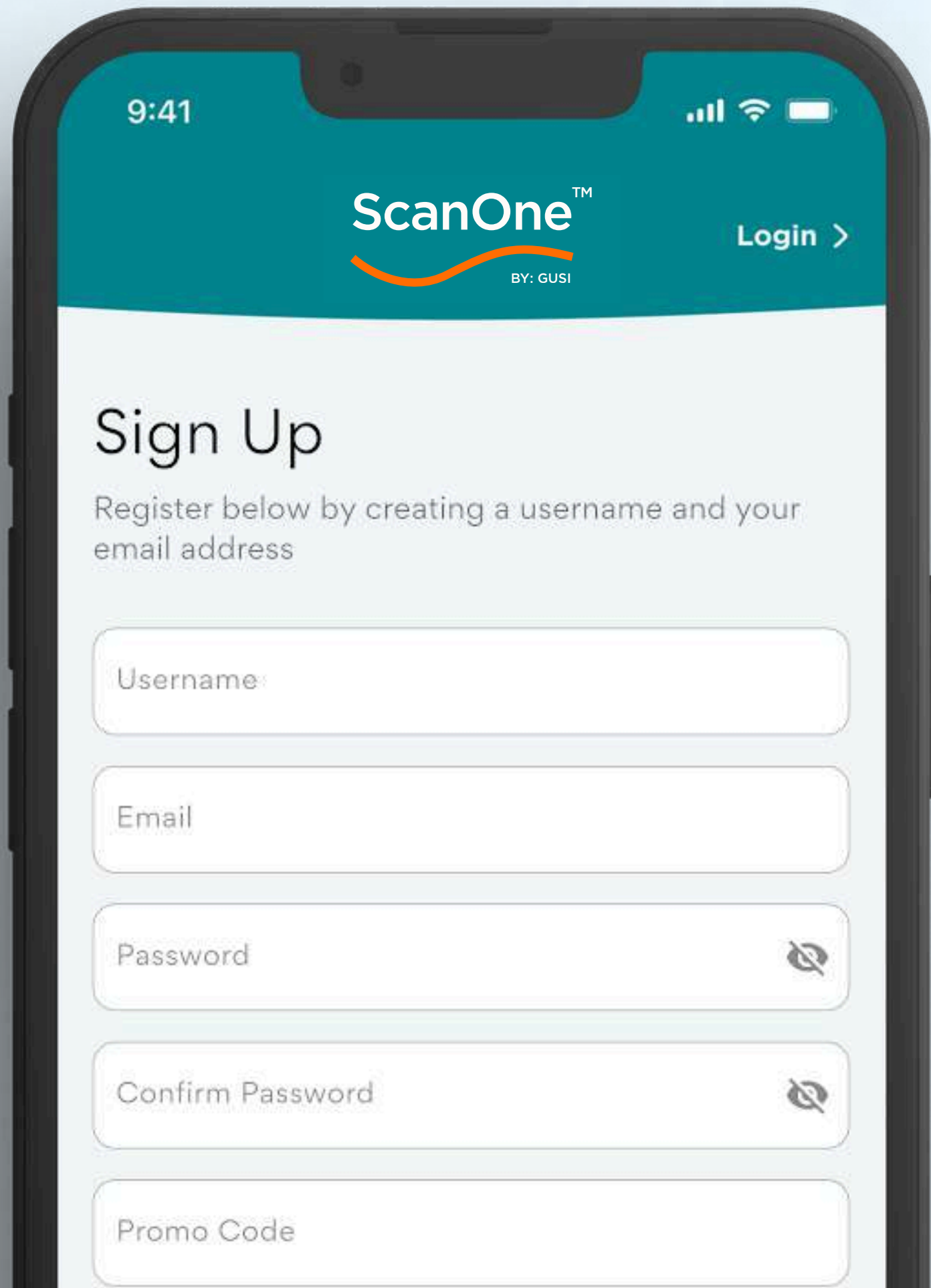
Remember me

I agree with the [EULA](#)

Log in

Forgot password?

G Apple

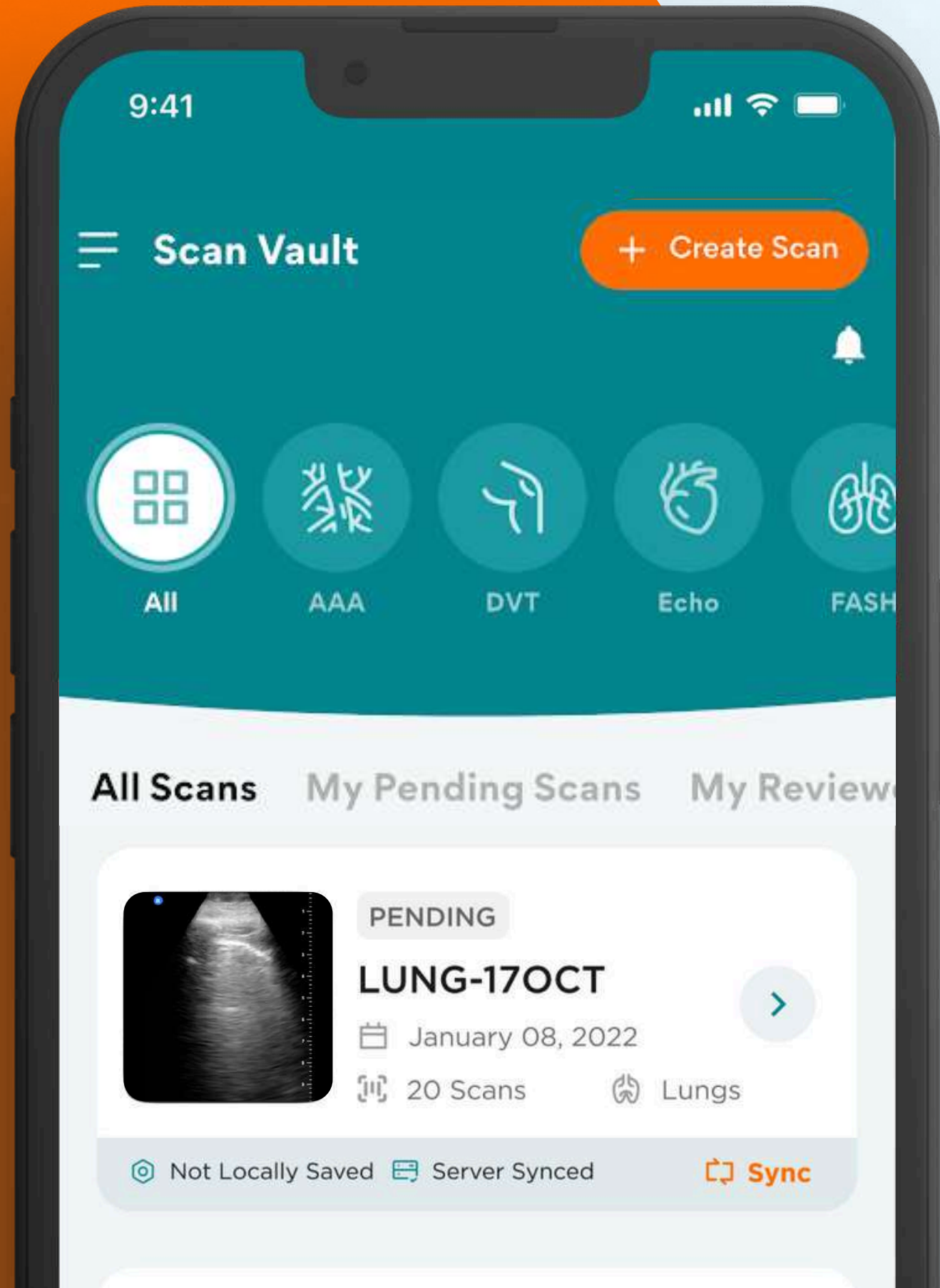


NEW USER?

If you're a new user, tap **Register** and enter your username, email, password, and promo code (if you have one).

Tap Sign Up to continue.

You'll receive an OTP in your email to complete your registration.



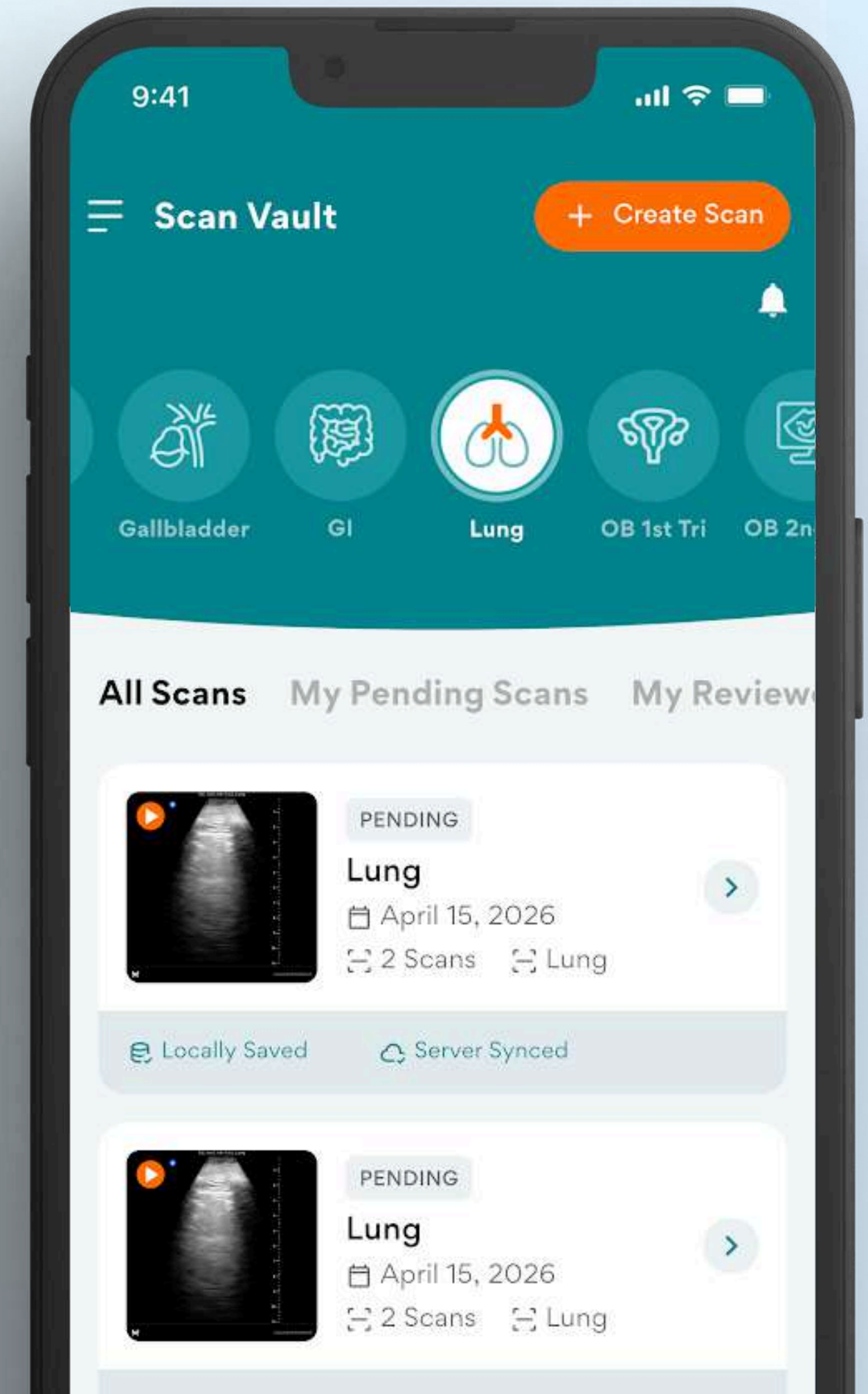
CREATE A NEW SCAN

PURPOSE OF CREATING A NEW SCAN

Creating a new scan allows you to upload medical imaging files such as ultrasound, CT, or other scan types for documentation, review, learning, or remote consultation.

You can use this feature to:

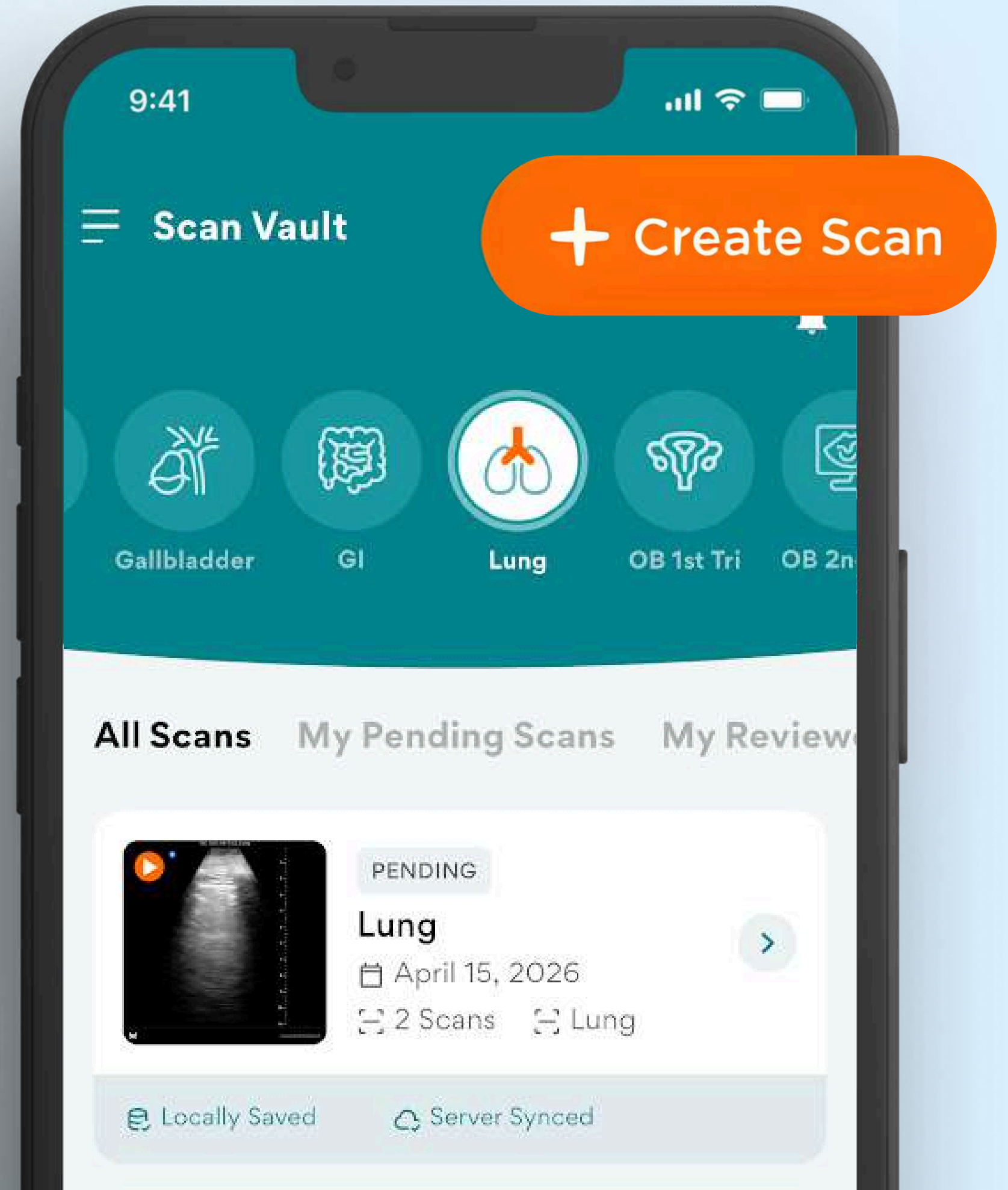
1. Upload a patient's scan for review, learning, or documentation.
2. Choose the source of your scan (Scan Vault, Camera, Gallery, or Video).
3. Categorize the scan under a specific study type (e.g., OB 1st Trimester, Gallbladder, Soft Tissue, Lung).
4. Track the review status (such as Pending Review) to monitor progress and feedback.



1

TAP ON CREATE SCAN

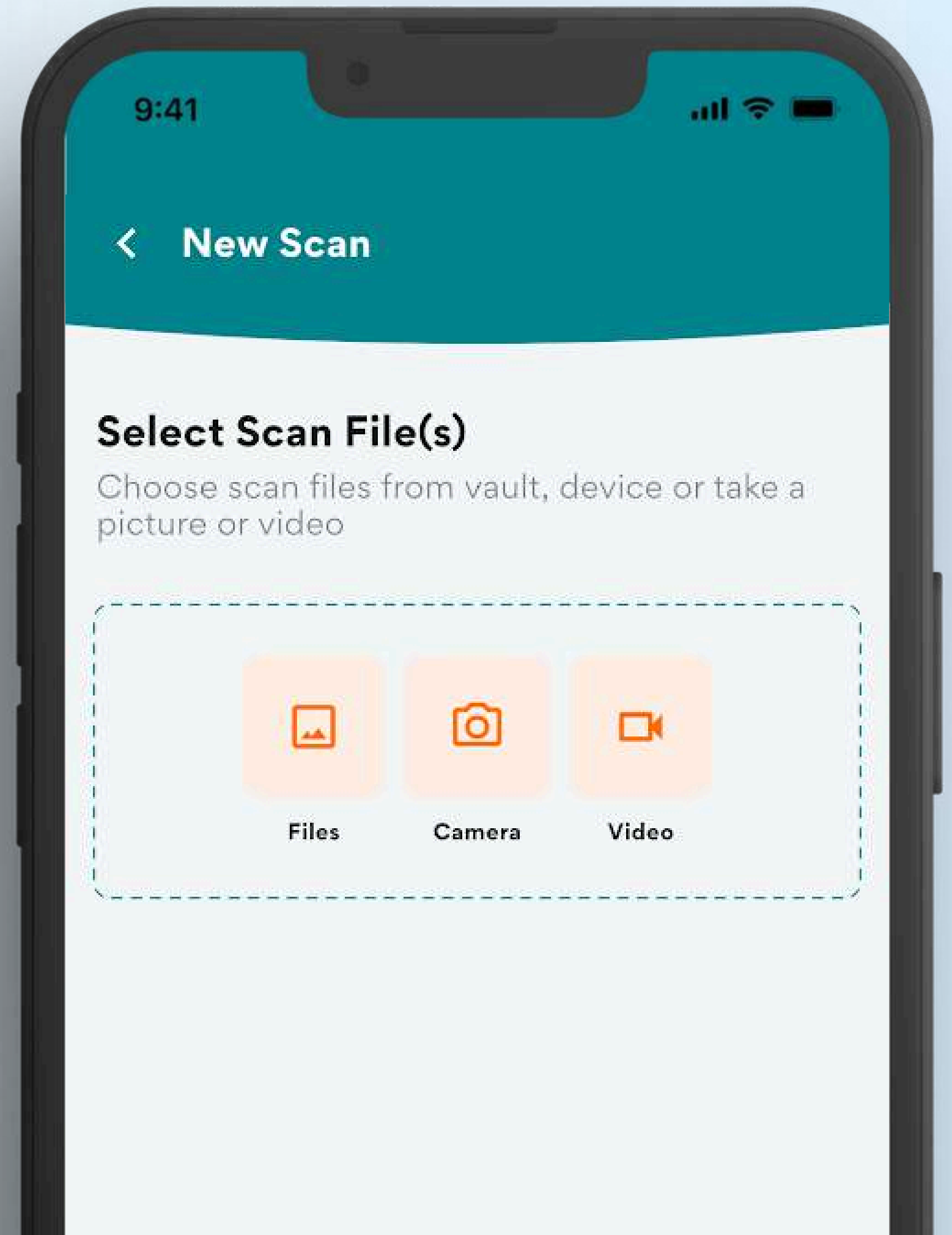
Tap **+ Create Scan** to make a new scan



2

CHOOSE A STUDY TYPE

Tap on any of the options to upload a scan. You may select from ScanVault, Gallery, Camera and Video. Tap Next when done.



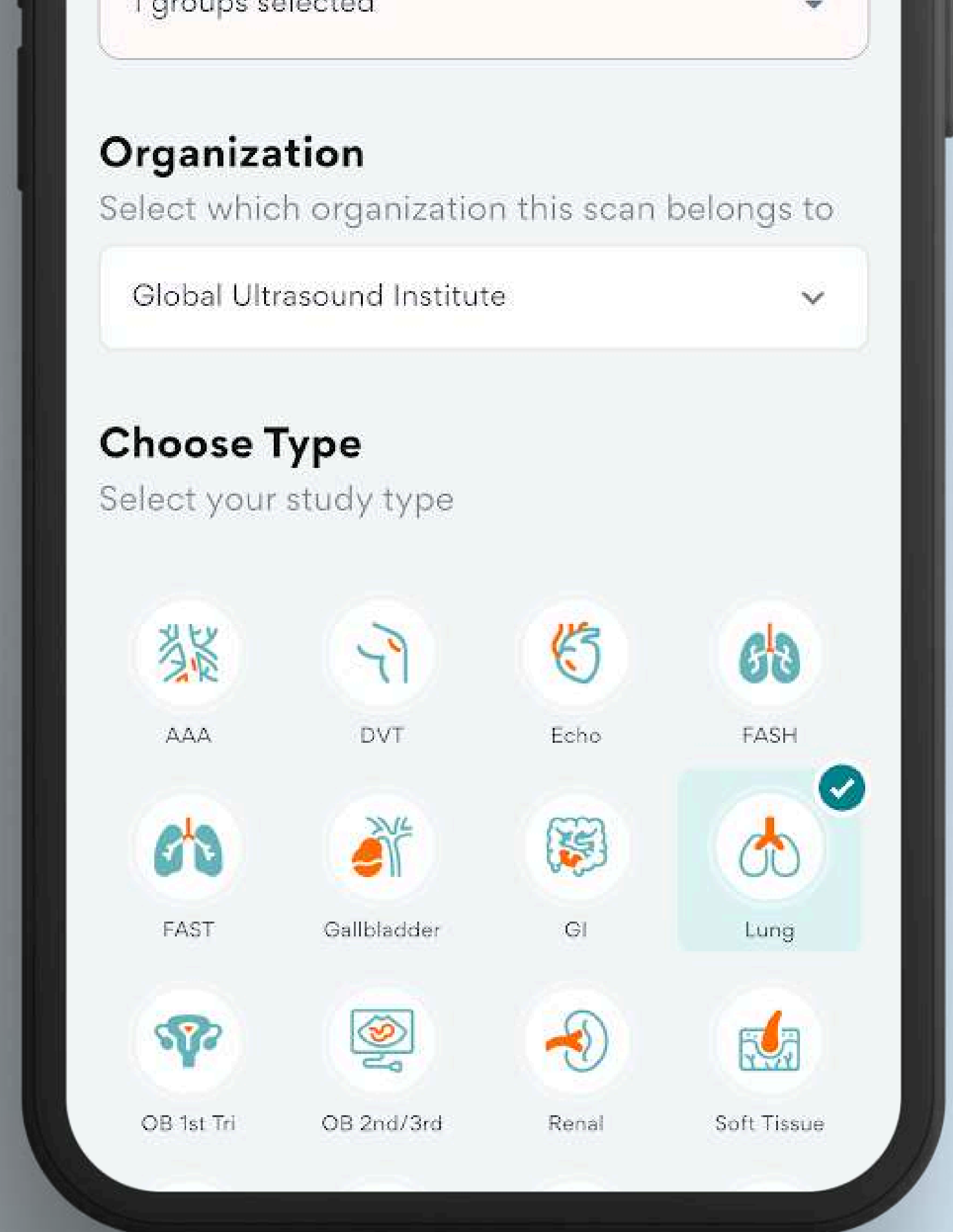
3

SELECT FINDINGS

Select the appropriate findings. You may also enter scan identifier and notes. These fields are optional. When done, tap Next then Submit.

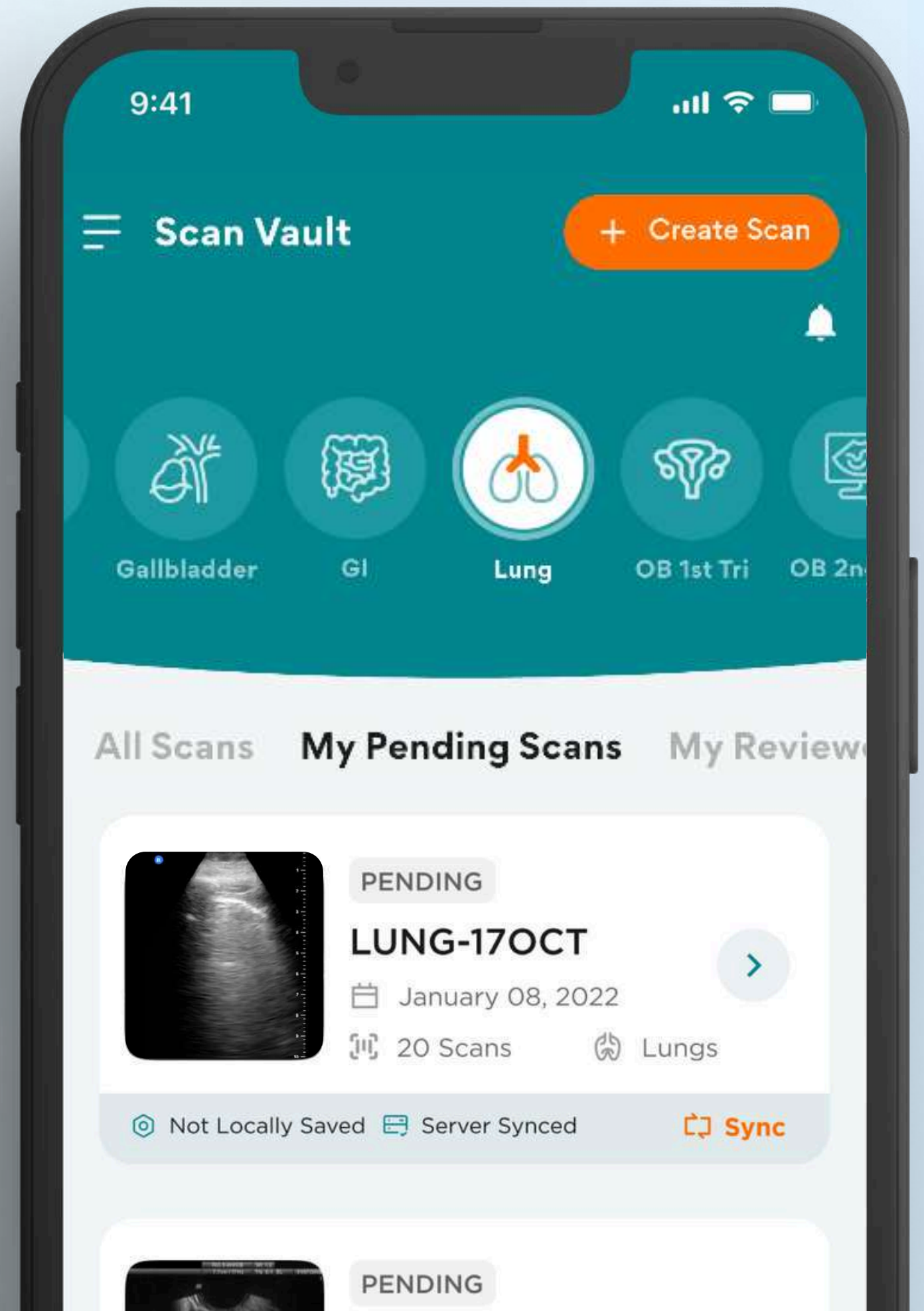


A Notification will show to track the progress of the upload.



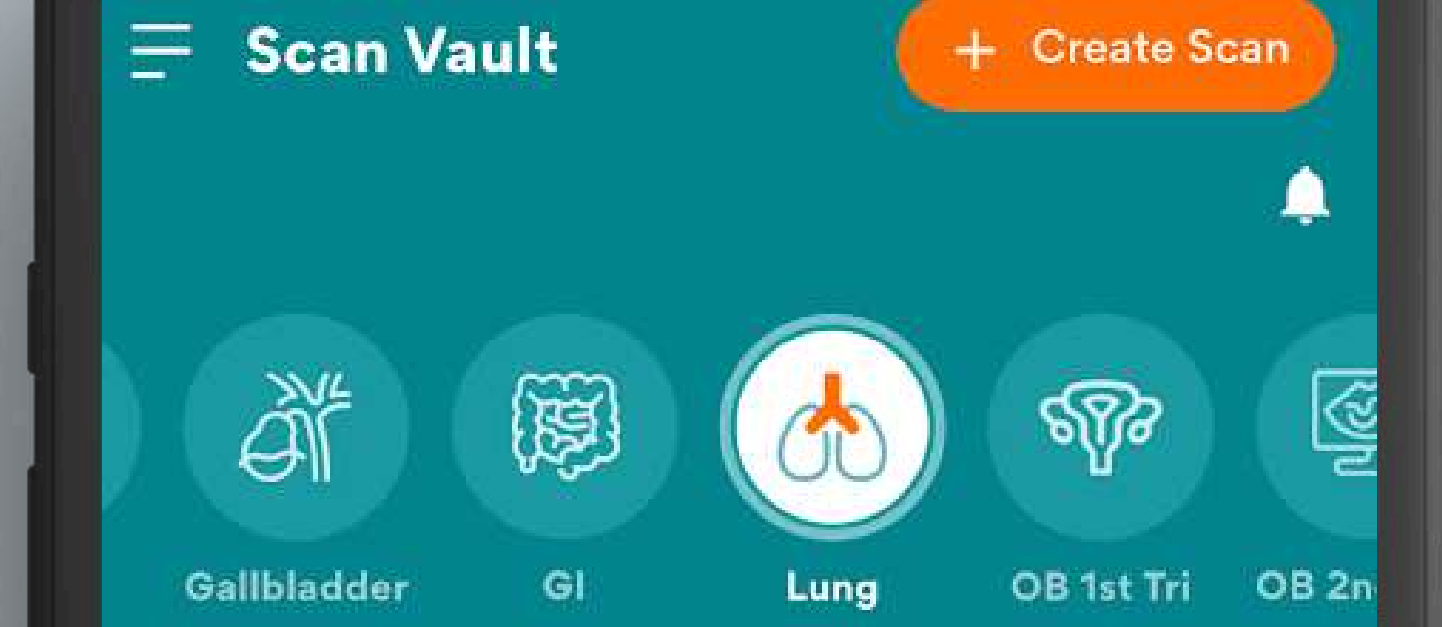
PENDING SCANS

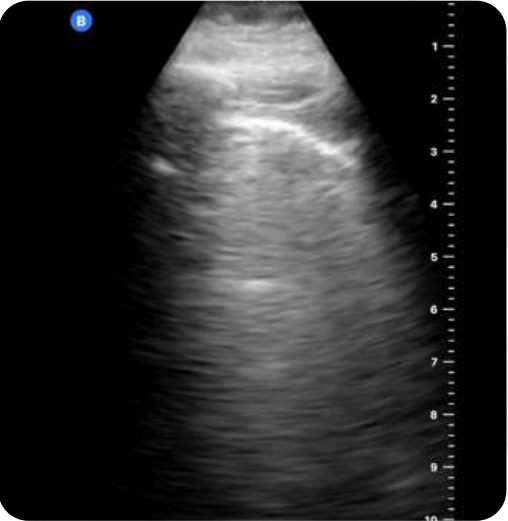
After submitting, the study will be tagged as pending. You will see all your pending scans at the Pending Scans tab.



REVIEWED SCANS

This section shows scans that you've already reviewed.





REVIEWED

LUNG-17OCT

January 08, 2022

20 Scans Lungs

Not Locally Saved Server Synced **Sync**



REVIEWED

LUNG-17OCT

January 08, 2022

20 Scans Lungs

Not Locally Saved Server Synced **Sync**

SCAN VAULT

The old Scan Vault will be retired in the future, but your existing scans and studies will not be lost.

All previously uploaded scans will be migrated into the new Scan Vault.

You can access your older scans by clicking on the Old Scan Vault link (available on the ScanHub Web App only)

Important Update: Scan Vault Transition

The old Scan Vault will be retired in the future, but your existing scans and studies will not be lost.

All previously uploaded scans will be migrated into the new Scan Vault and will remain available as part of your learning record.

If you would like to access your old scans during the transition, you may click [Old Scan Vault](#)

[See more](#) ▾





Filter files by filer

Select date range

All ▾

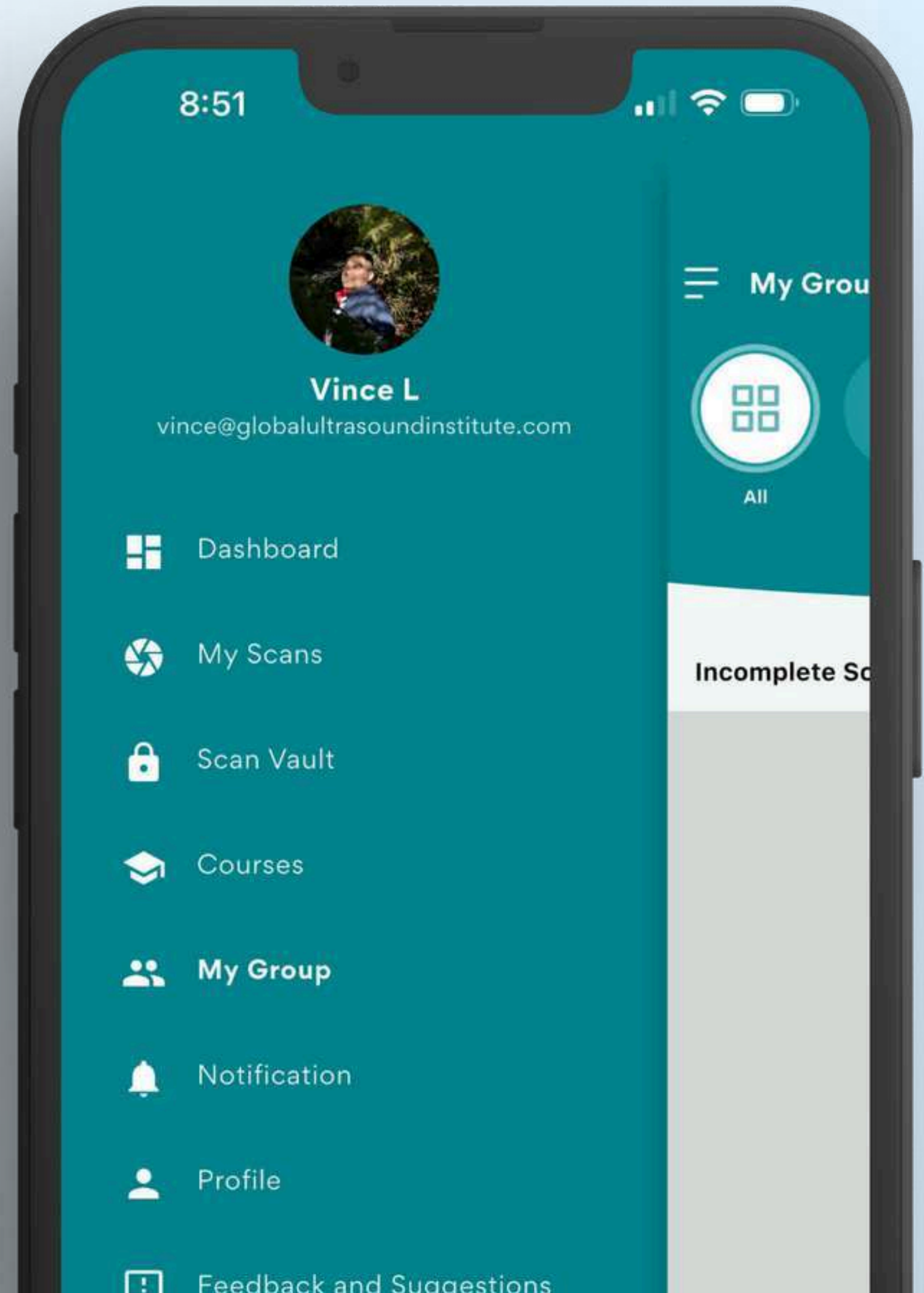
Columns

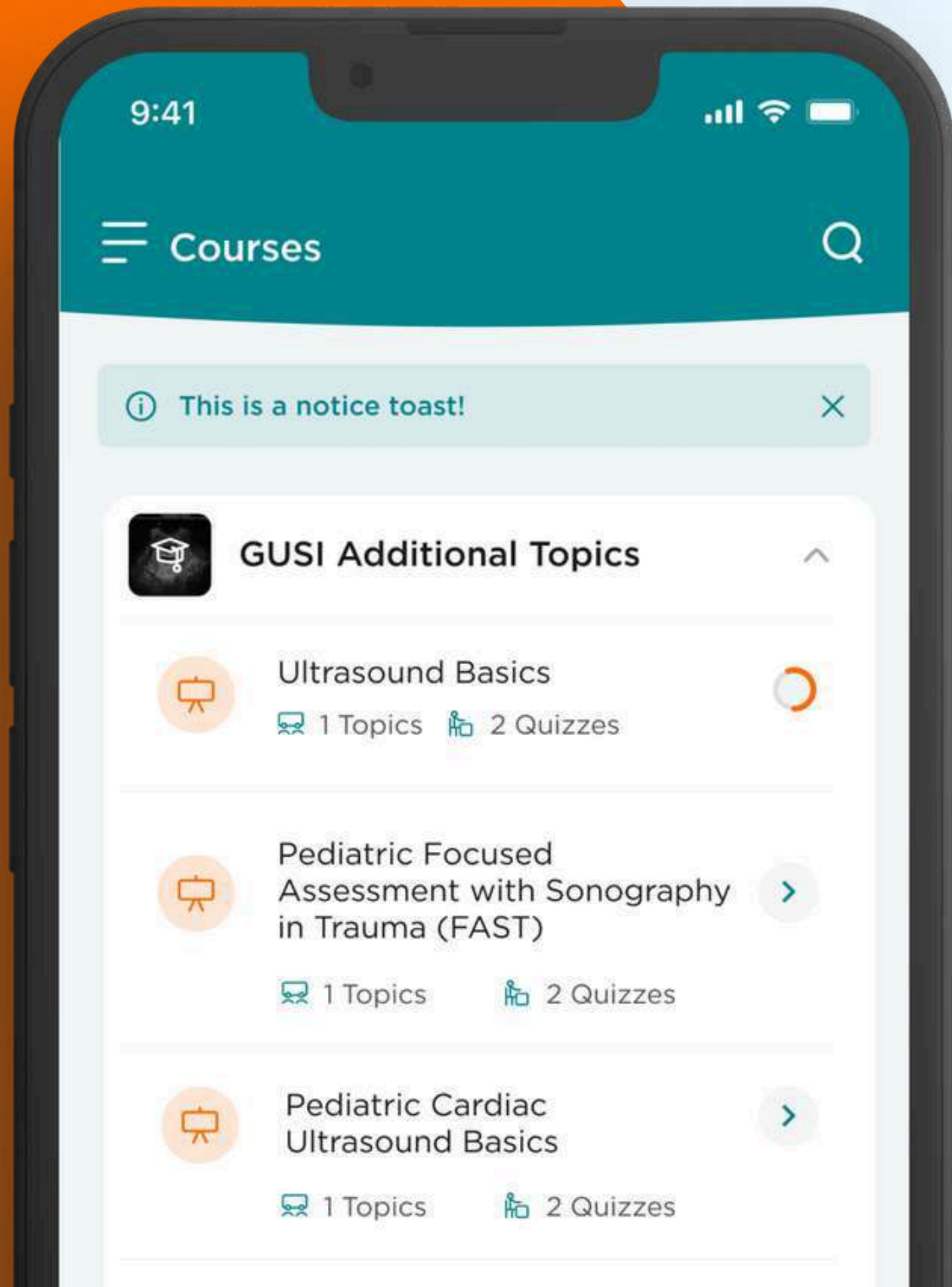
Show files with no assigned Exam Type

<input type="checkbox"/>	Filename	File Type
<input type="checkbox"/>	 image_picker_D0D0B5F0-4B36-475...	image/
<input type="checkbox"/>	 image_picker_77CBAEAC-B3FC-4EC...	video/r

GROUP LEADER

1. Tap the hamburger icon ☰ to show the drawer menu.
2. Tap Incomplete Scans to show scans that needs your review. *This menu is not available for Learner/Subscriber.*
3. Tap Completed Scans to show scans that you already reviewed. *This menu is not available for Learner/Subscriber.*




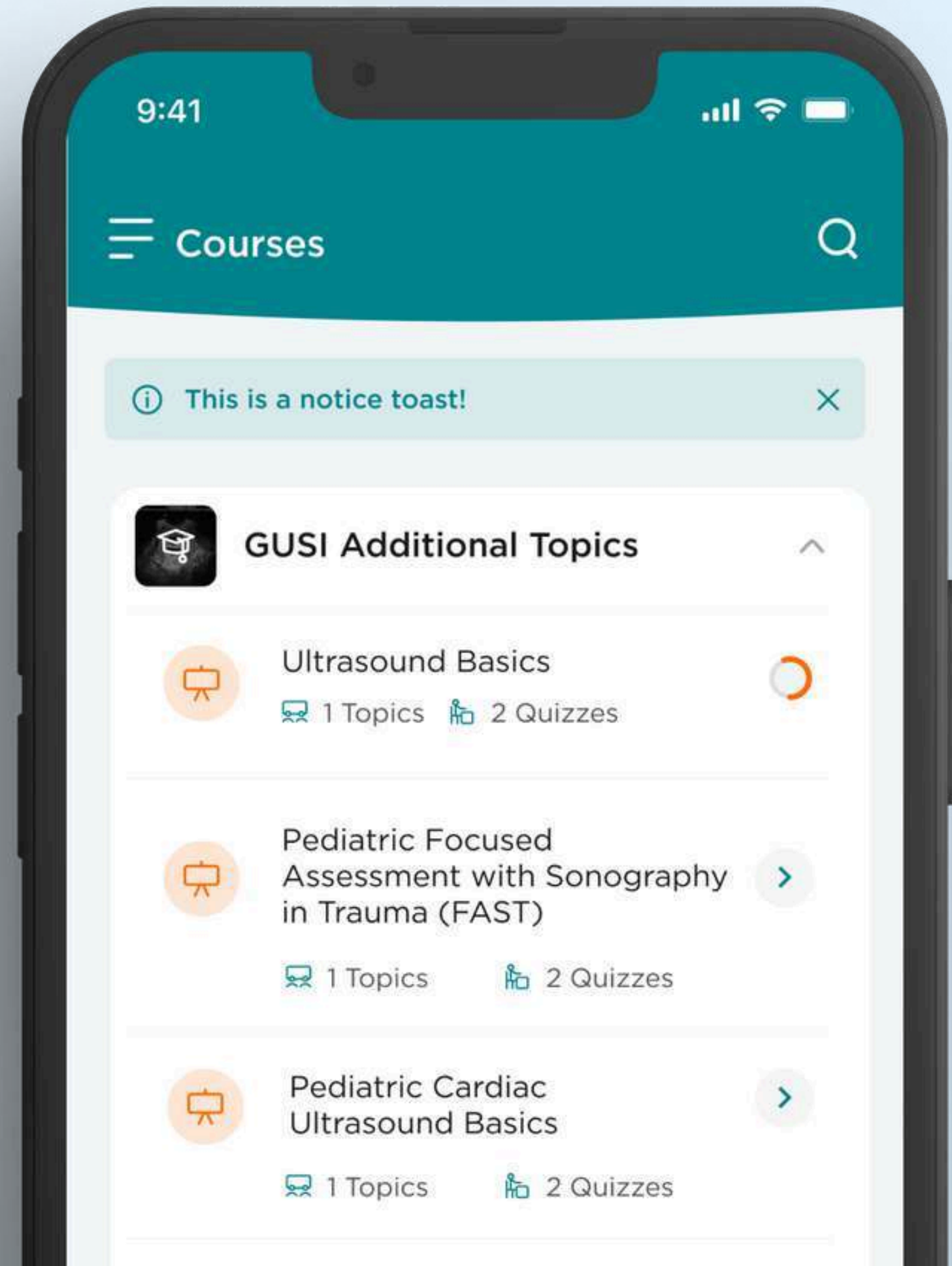


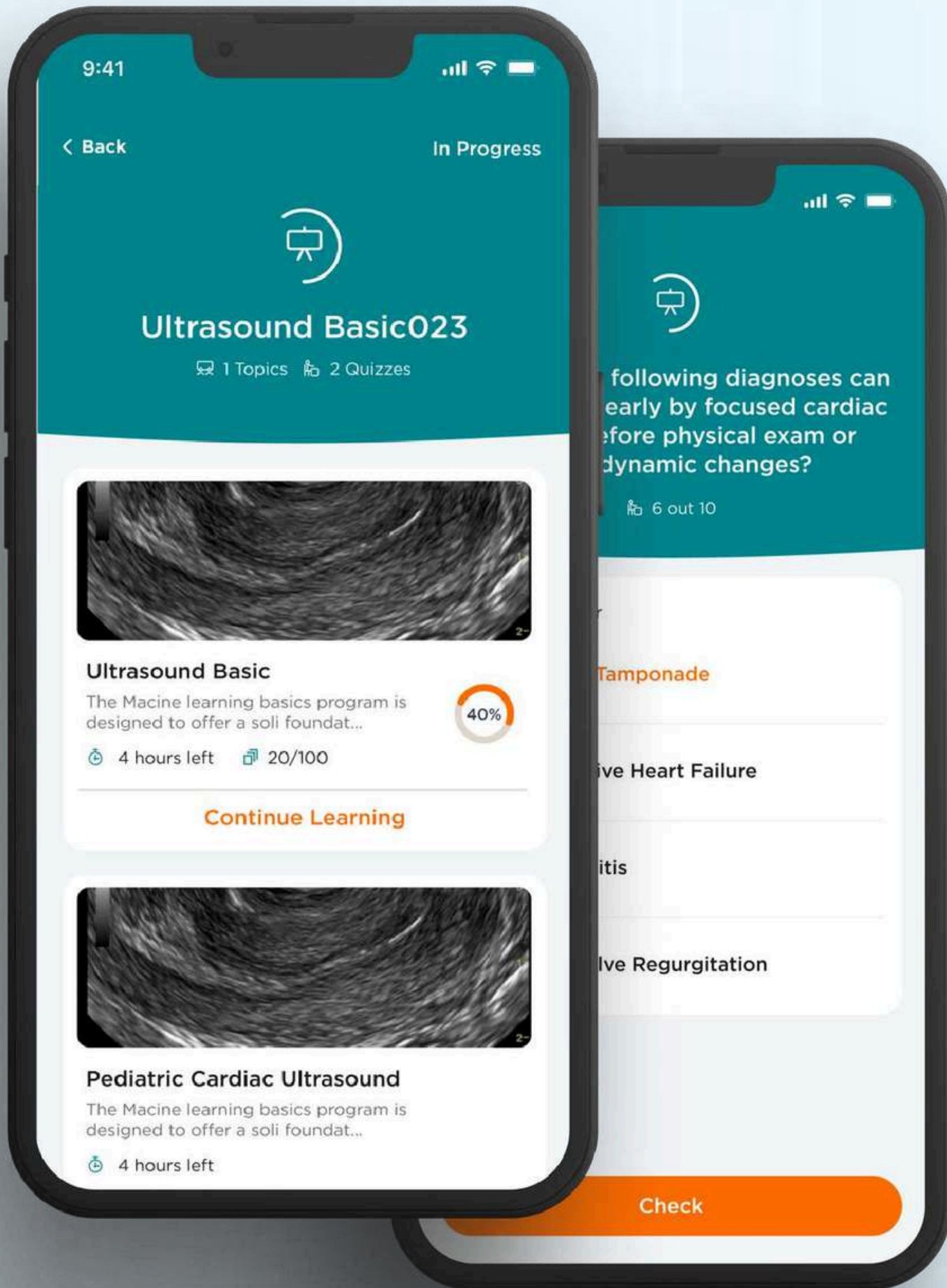
MY COURSES

1

FIND MY COURSES

Tap the hamburger icon  to show the drawer menu and Tap Courses.

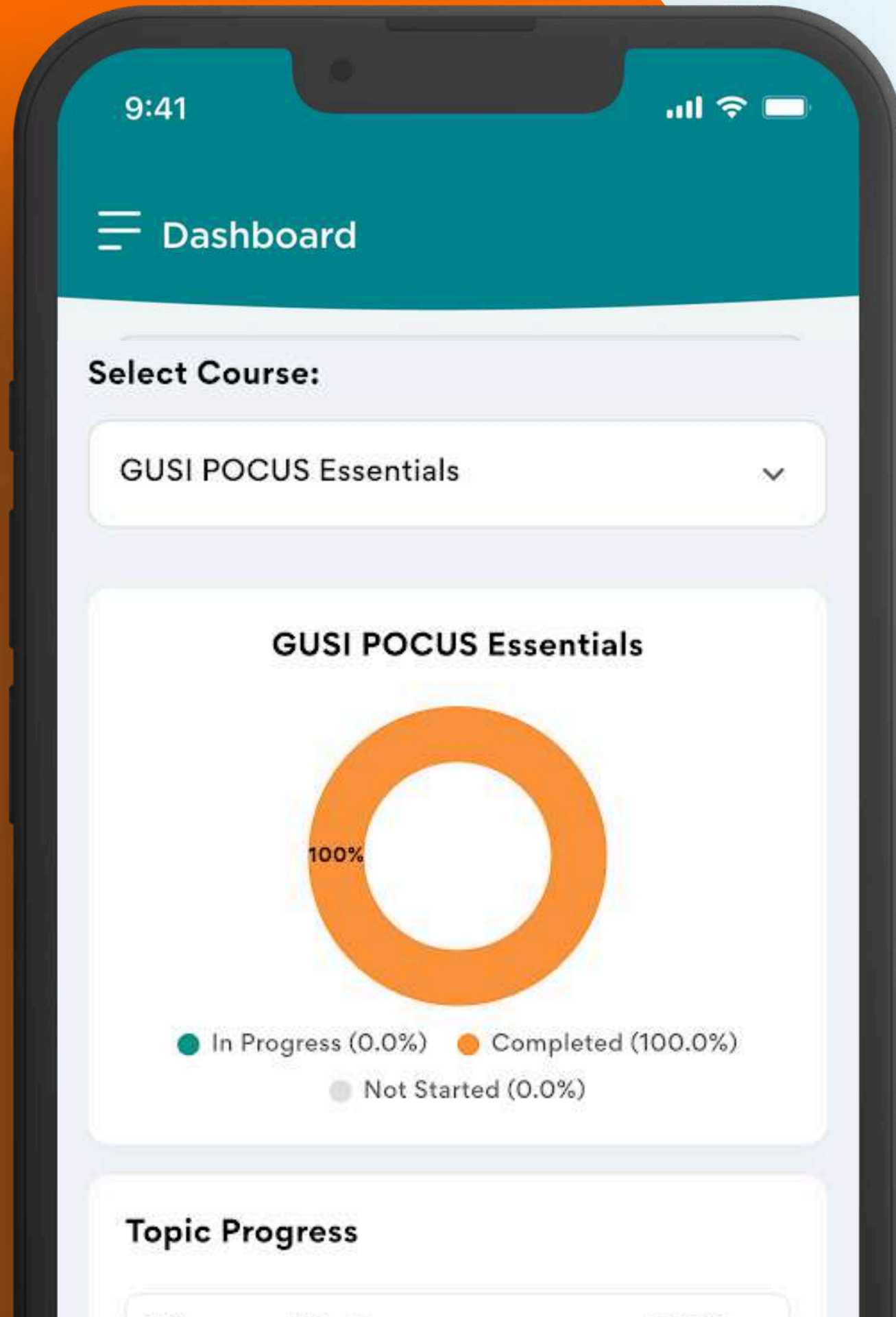




2

SELECT AVAILABLE COURSES

You'll see the courses and quizzes available to you. You can also review your answers and check whether they're correct.

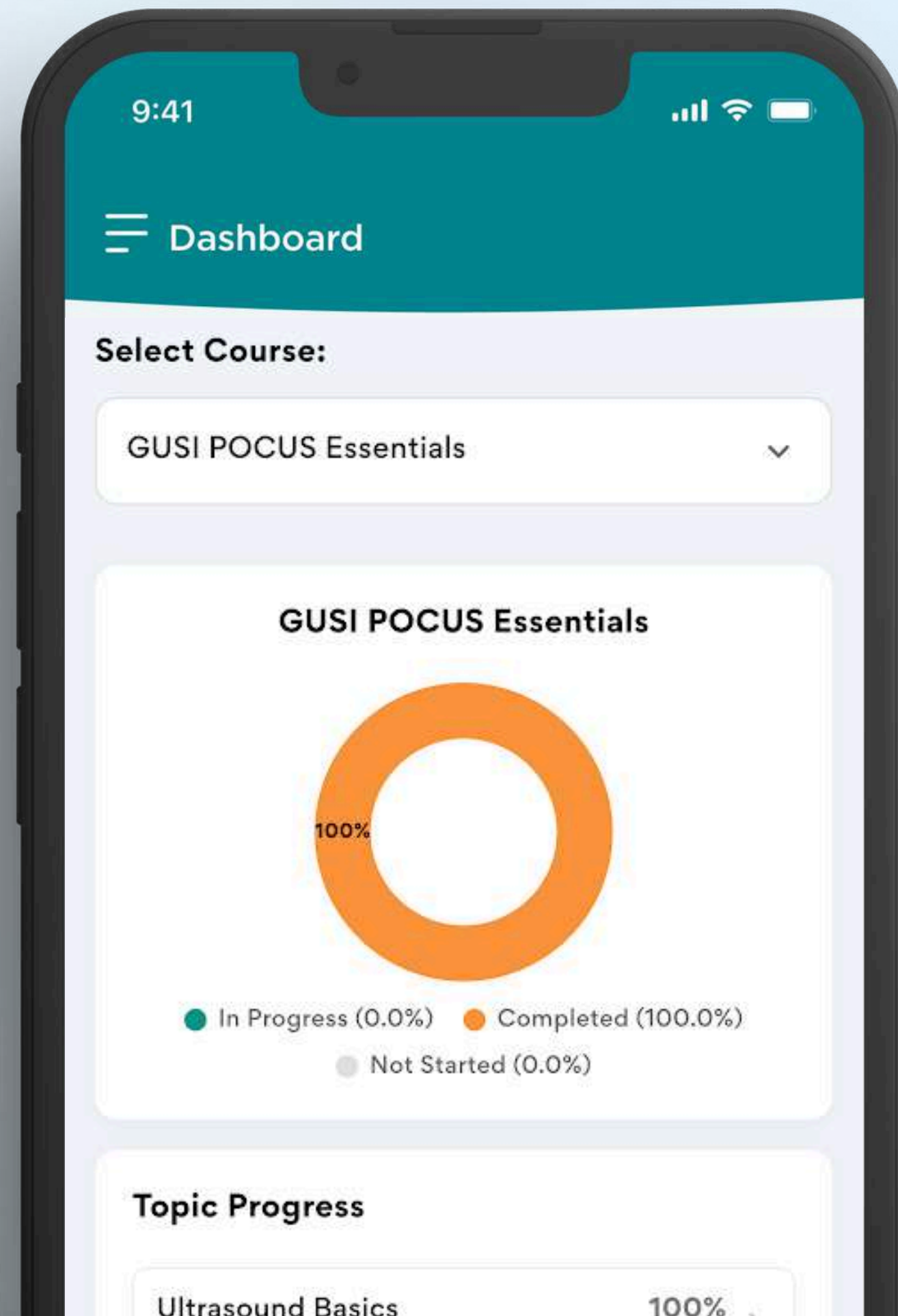


DASHBOARD

DASHBOARD

1. Tap the hamburger icon ☰ to show the drawer menu.
2. Tap Dashboard

This screen will show you a summary of courses you've taken as well as the scans you've submitted and reviewed.

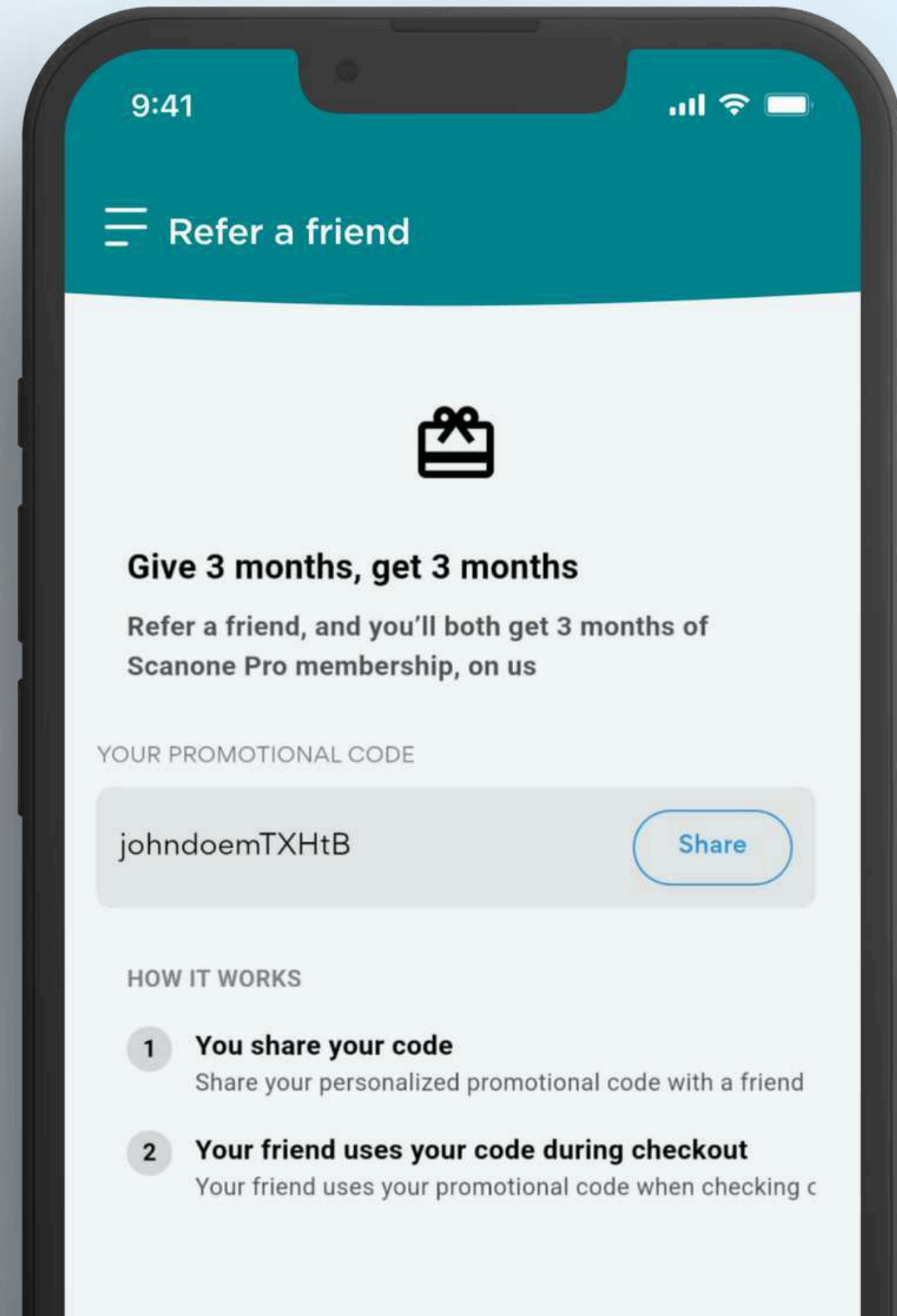


REFER A FRIEND

1. Tap the hamburger icon ☰ to show the drawer menu.
2. Tap Refer a friend

From this screen, you can share your unique referral code with others.

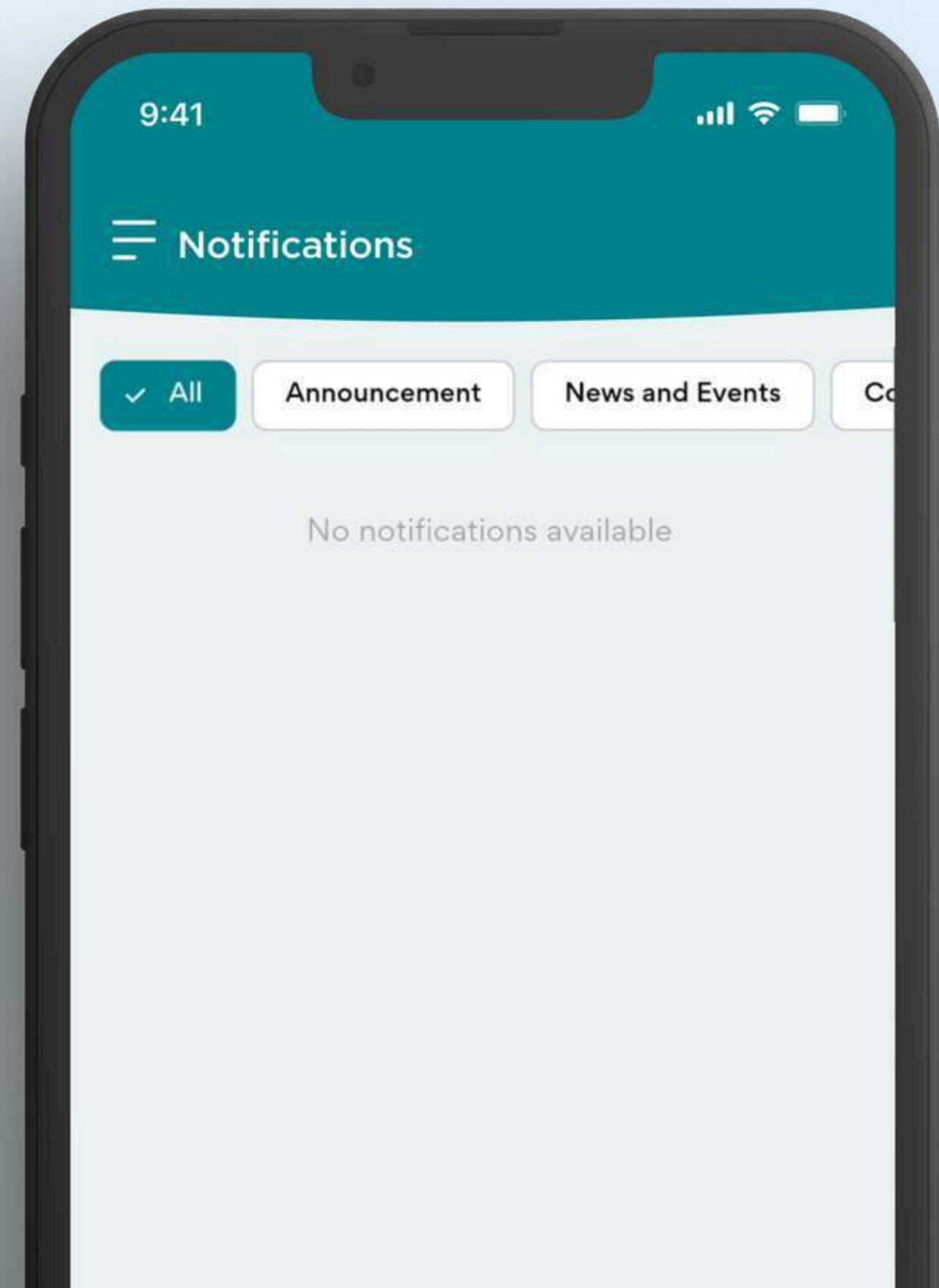
If someone uses your code during registration, you'll earn points that can be converted into rewards.



NOTIFICATIONS

1. Tap the hamburger icon ☰ to show the drawer menu.
2. Tap Notifications

This is where you'll receive updates such as news and announcements about the app.

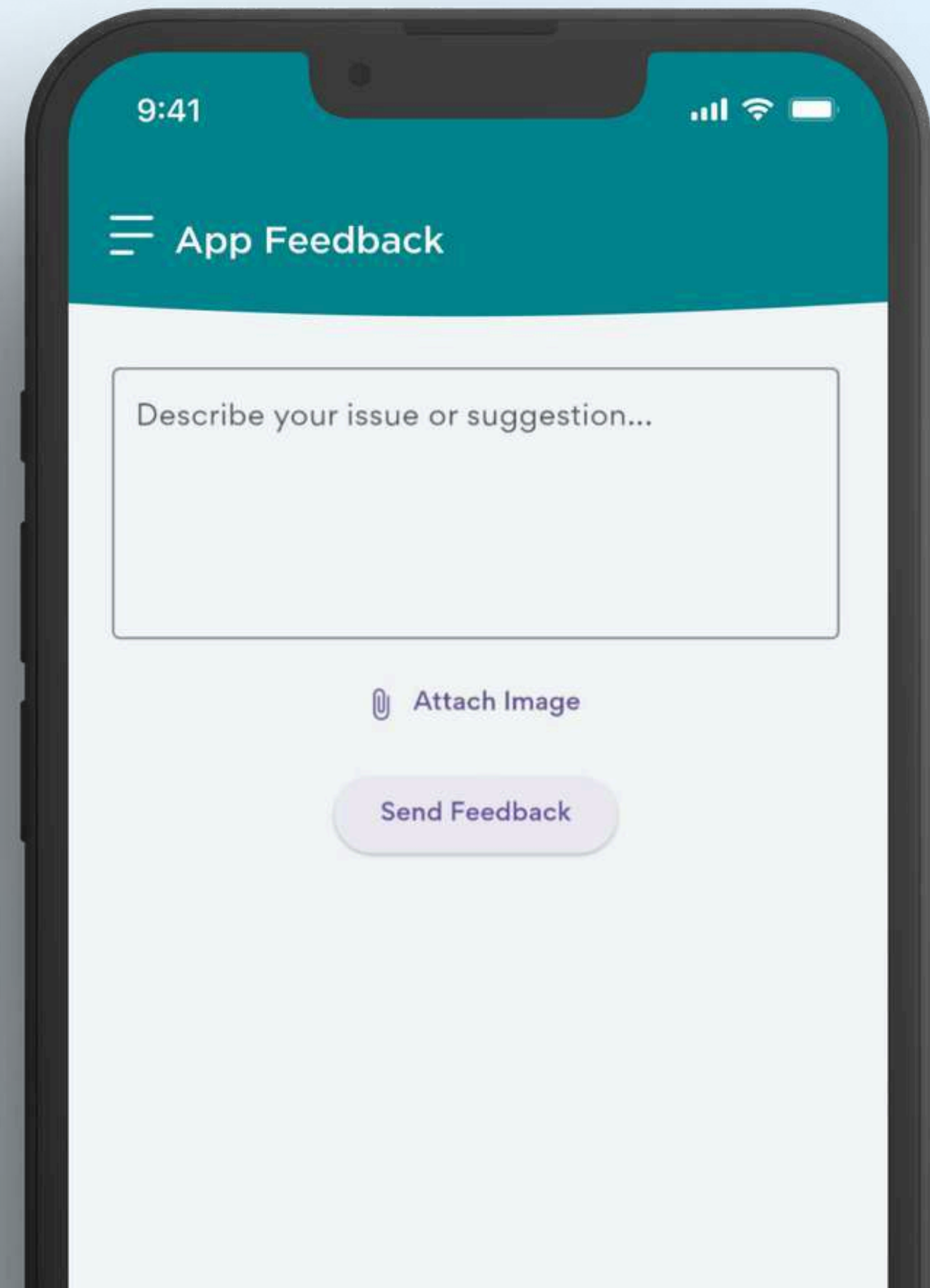


FEEDBACK & SUGGESTIONS

1. Tap the hamburger icon ☰ to show the drawer menu.
2. Tap Feedback and Suggestions

You can share your feedback, report issues, or suggest improvements.

You may also attach images and text to better explain your concern or idea.

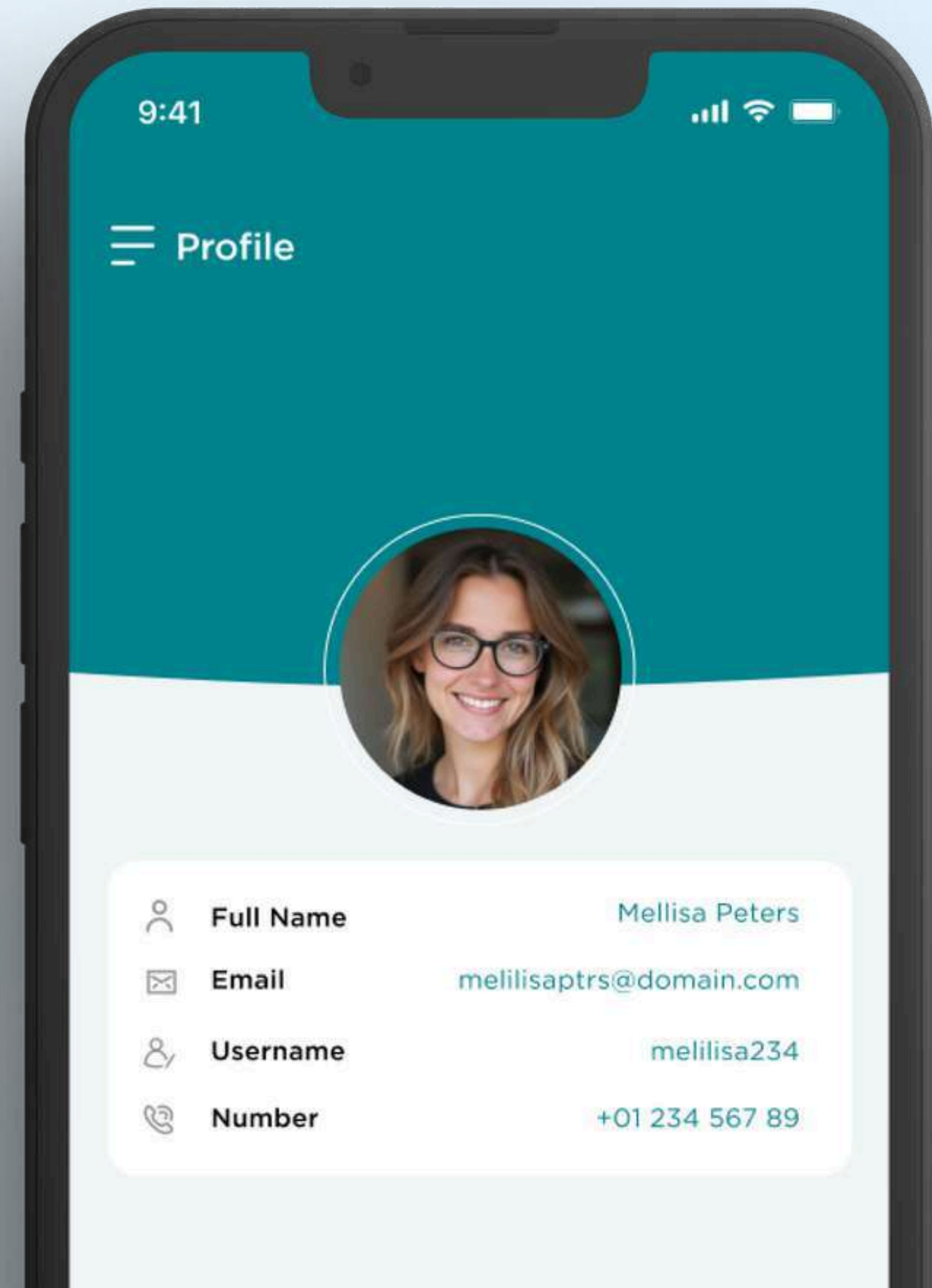


MY PROFILE

1. Tap the hamburger icon ☰ to show the drawer menu.
2. Tap Profile

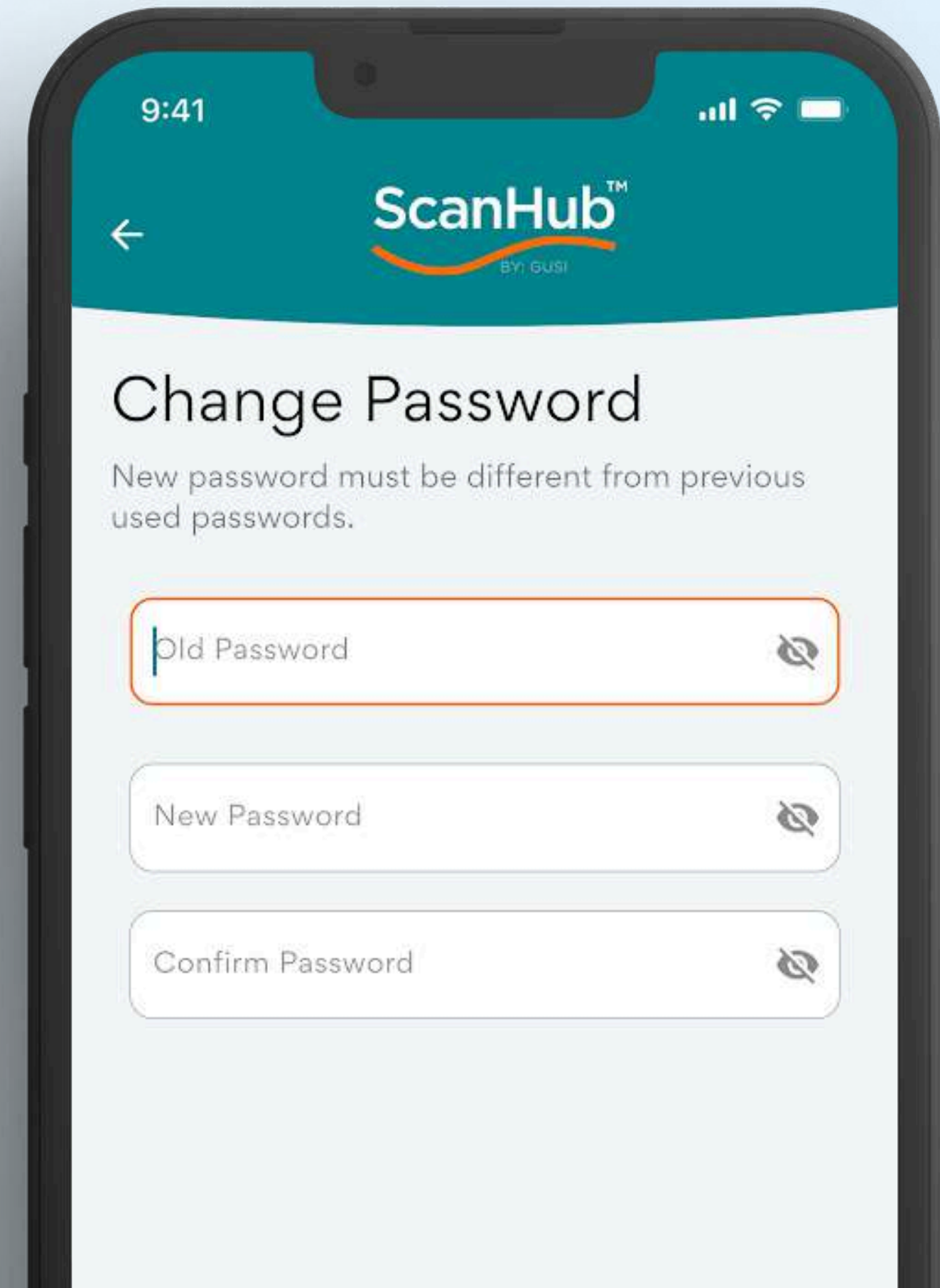
Here, you can:

- View your profile details
- Update your first name, last name, and profile photo
- Change your password
- Delete your account



CHANGE PASSWORD

1. From the Profile screen, tap Edit Profile.
2. Select Change Password.
3. Enter your current password, new password, and confirm the new password.
4. Tap Submit to save your changes.



9:41

ScanHub™
BY: GUSI

Change Password

New password must be different from previous used passwords.

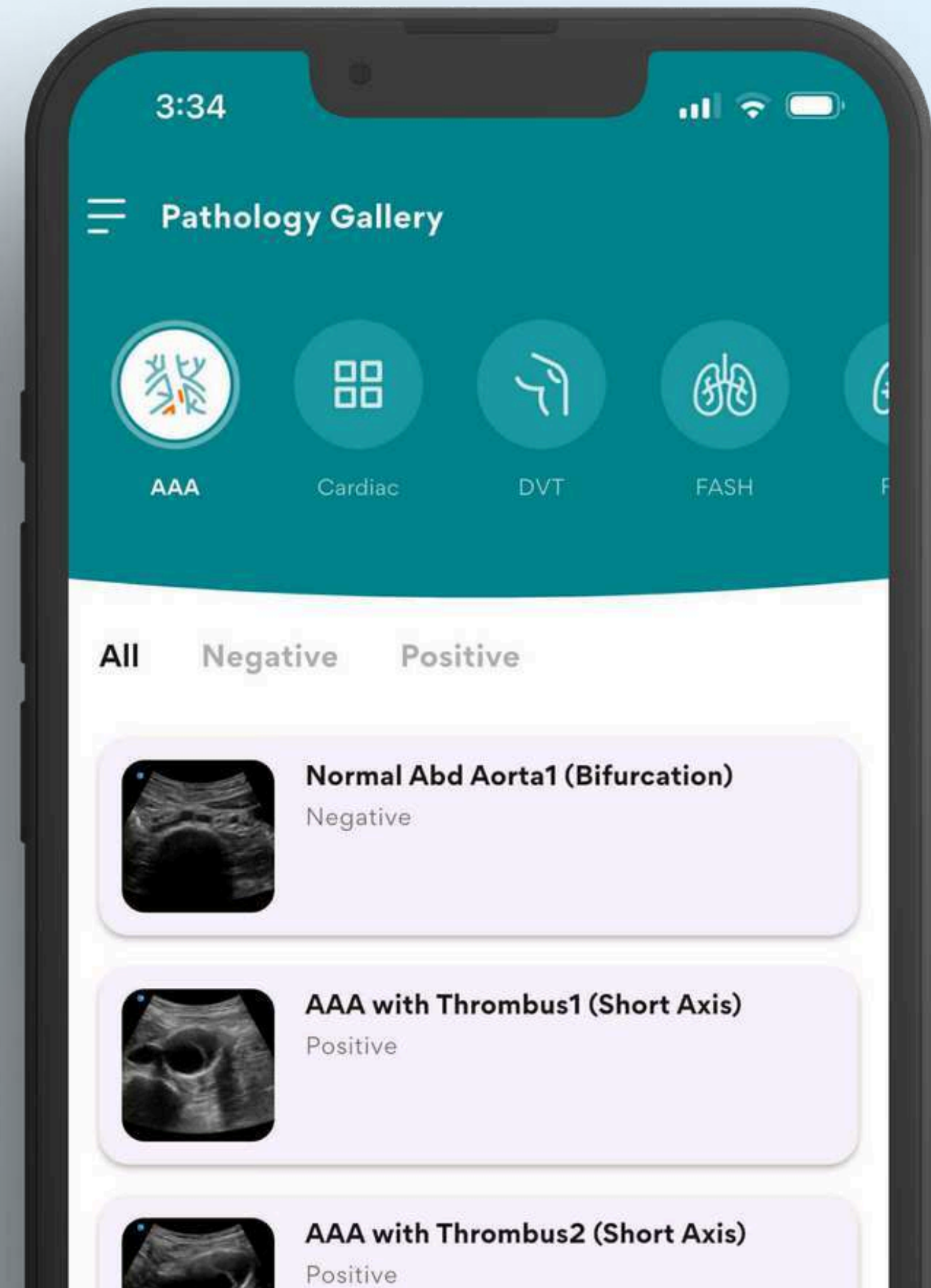
Old Password

New Password

Confirm Password

PATHOLOGY GALLERY

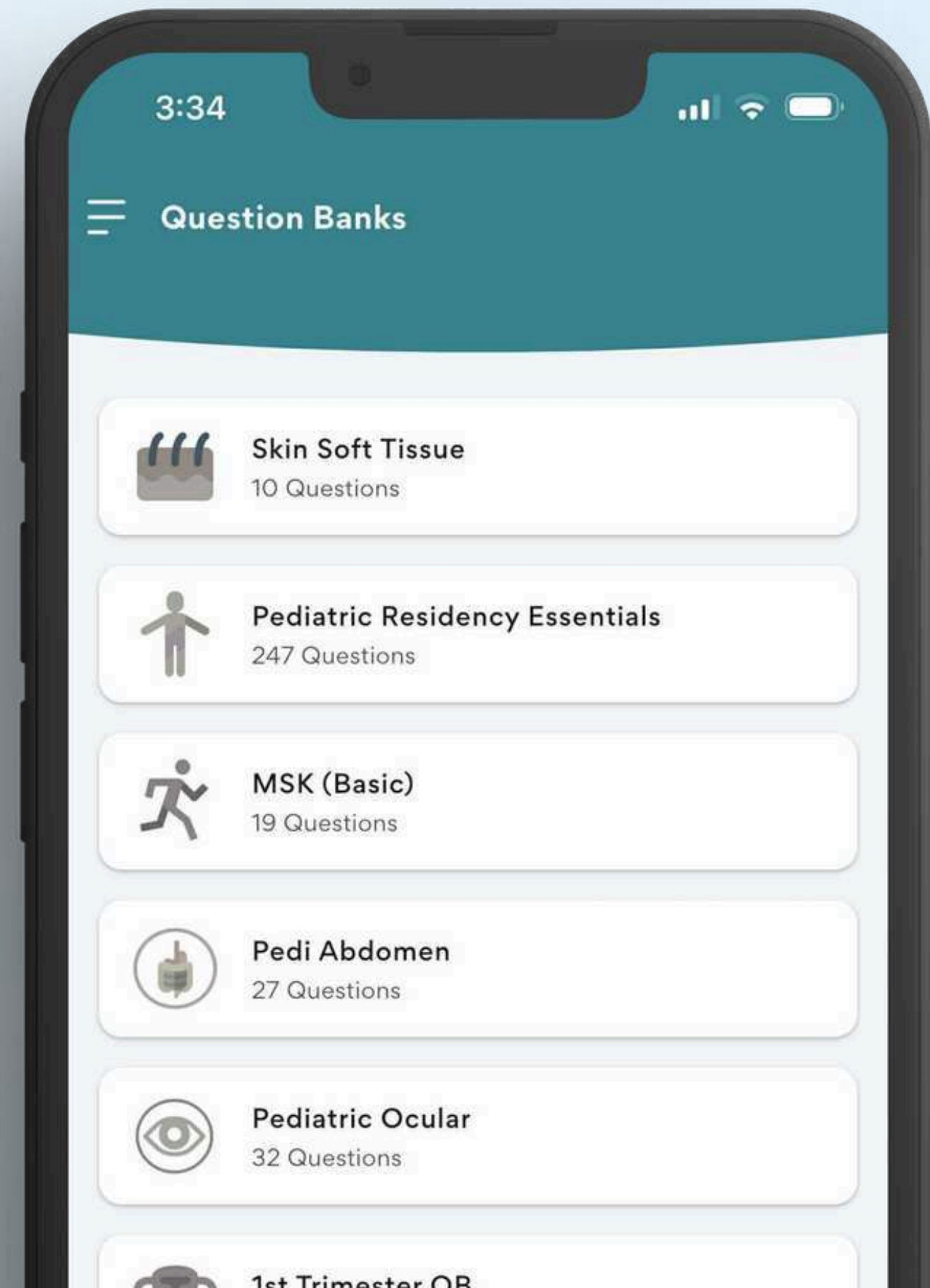
The Pathology Gallery is a curated collection of real ultrasound scans designed to help you identify, compare, and learn from various medical conditions across different body systems.



QUESTION BANK

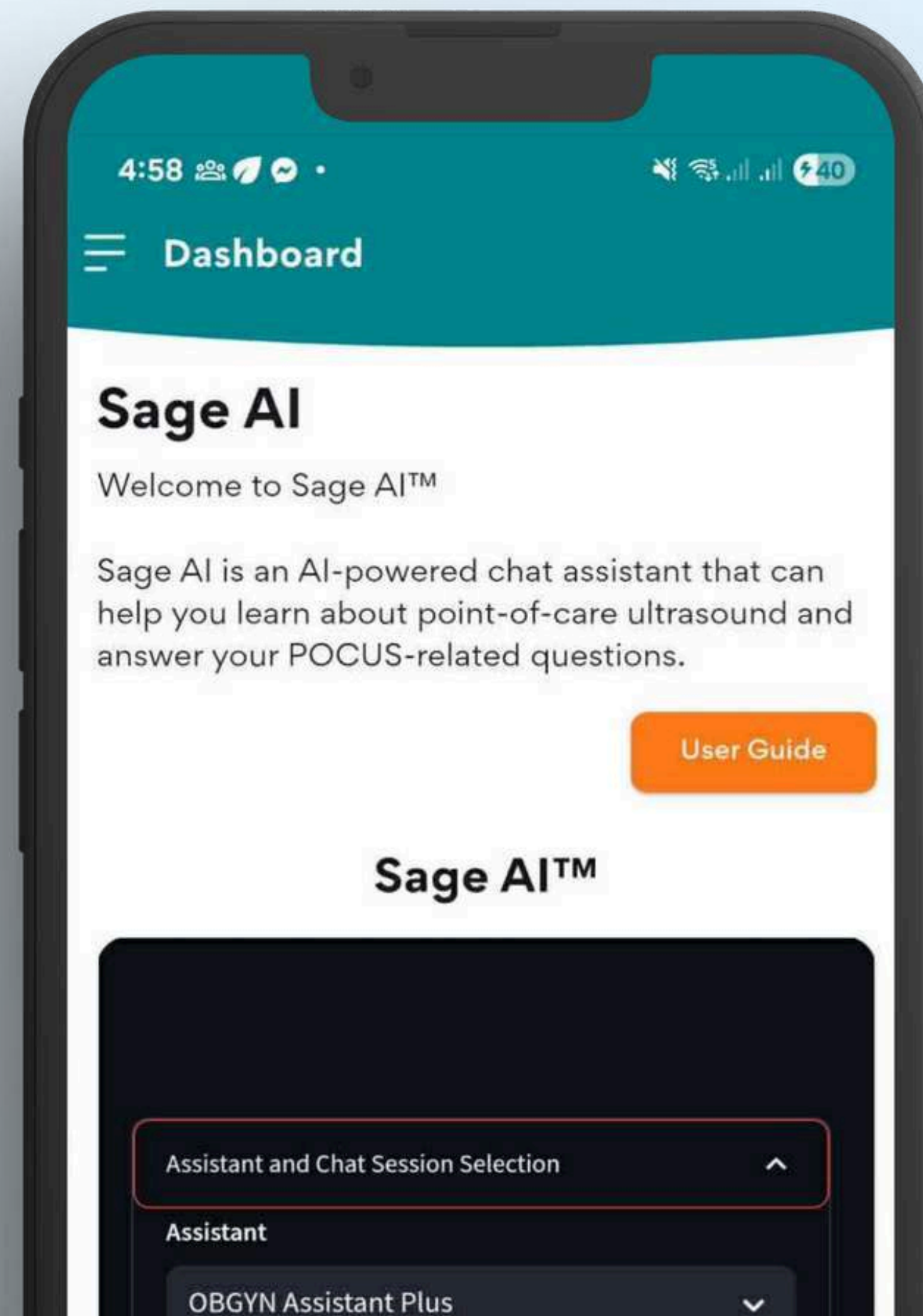
The Question Bank is your go-to resource for quick, reliable answers to common ultrasound and ScanOne related questions.

Whether you're troubleshooting a scan, reviewing protocols, or learning best practices, you'll find expert-curated FAQs designed to support both beginners and experienced users. The content is regularly updated so you always have the latest information.





SAGE AI™ is your AI-powered assistant, providing instant, expert-validated ultrasound guidance exactly when you need it. Whether you're scanning in real time or reviewing images, SAGE AI™ helps you identify key structures, improve accuracy, and make confident decisions with every scan.





THANK YOU

